

# HIMOD GPR

High Accuracy Utility Mapping Array System GPR



## Description :

The RIS MD HIMOD represents the latest generation & most current technology in array based GPR for providing highly accurate mapping of utilities. The HIMOD utilises multiple antennae (upto 8 channels) at multiple frequencies and is based on a cart system that is 2.0m wide, providing max walking speed upto 10km/hr. The RIS MF keeps the field procedure of making both longitudinal and transversal scans. The system is based on a central high powered processing system connected in an array with multiple antennae to carry out high resolution capture, collation and processing of underground utility mapping in 2D/3D which can be exported to CAD.

## Features :

### Hardware

- FastWave: the fastest digital radar control unit on the market, providing a high stacking factor and hence superior penetration depth.
- Chain architecture: antennas are added to the system in a "chain" connection in "plug and play" mode.
- Multifrequency: each antenna houses 200 and 600 MHz frequencies for better penetration and resolution.
- Modular design: can be reconfigured in the field (no tools required ) for use with from 1 to 4 antennas.
- Robust: robust while light mechanical structure for intensive use.
- All terrain: the trolley has been designed for both asphalt and rough terrain.



### Software

- Automatic detection tools for high productivity.
- High penetration depth.
- High modular array structure adapts to use in both narrow passages and open spaces.
- Easily mounted and reconfigurable in the field.
- Can be used on all terrains: asphalt, grass and rough terrains.

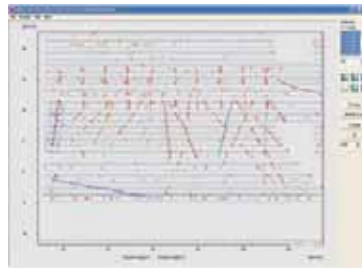
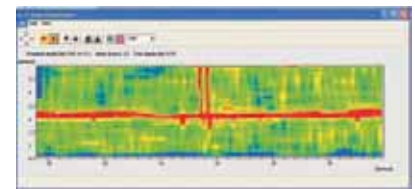
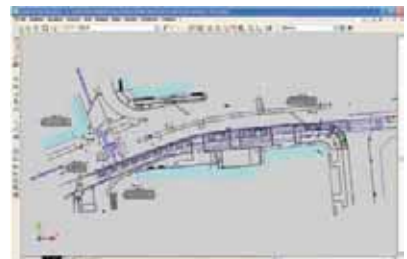


Image showing automatic target detection (red points) where aligned points identify pipes



Tomographic map showing main pipes & junctions



3D view with detected pipes



Identified pipes are automatically transferred to CAD drawings

## Specifications :

Data Logger	Panasonic CF-19
Radar Acquisition unit	IDS DAD FAST WAVE, with RIS K2 acquisition software
Max Number of channels	Up to 8
Antenna Frequencies	200 and 600 MHz
Positioning	Metric wheel and/or GPS interface
Collection Speed	4 m/sec in full configuration (8 channels)
Battery operation time	>8h
Weight	58 kg full configuration
Size on ground	200 cm x 60 cm (full configuration)
Survey path width	Up to radar scans, 52 cm each
Wireless connection	Available
Environment	Ip65

Item Code : ST-LNL800