

Industrial VideoScope | X2000



Clearness | Sharpness | Brightness

True Sight : 360° Articulated Probes

Bending Angle upto 140°. Super Resolution & Fine Image Quality

Probe options : Configure your X2000 with probe meeting your application requirement



6.0mm Probe (front view)=Still image & video output resolution:2560x1440



3.9mm Probe (front view / Dual View)=Still image & video output resolution:1600x1600



2.8mm Probe (front view)=Still image & video output resolution:800x800

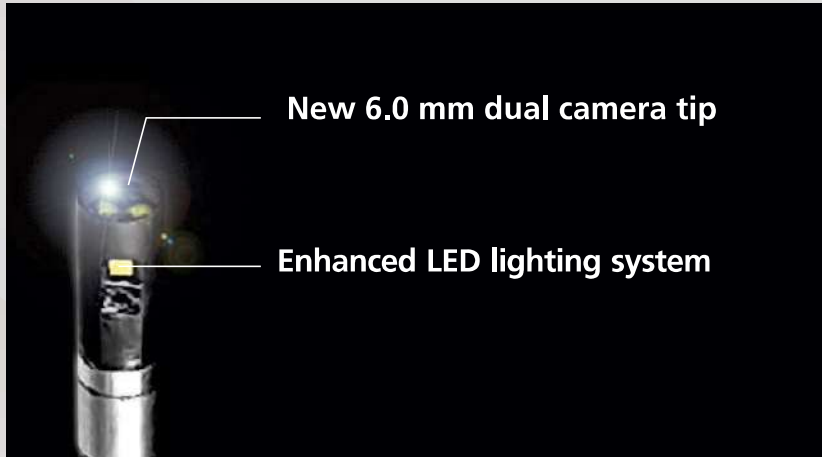
Models Options	60D4W-F_TU-M	60D4W-F_TU-F	60D4W-FS_TU-M	39D4W-F_TU-M	39D4W-FS_TU-M	28D4W-F_TU-M
Probe head diameter	6.0 mm			3.9 mm	3.9 mm	2.8 mm
Probe length	2 m / 3 m / 5 m / 7 m		2 m / 3 m / 5 m / 7 m / 10 m	1.5 m / 3 m	1.5 m / 3 m	1.5 m
Probe head length	19.3 mm		2 m / 3 m: 21.5 mm 5 m / 7 m / 10 m: 24.4 mm	13 mm	21.6 mm	10.1 mm
Direction of view	Front view		Dual View Front + Side	Front	Dual View Front+Side	Front
Illumination	Front LEDs		Front / side LEDs	Front LEDs	Front / Side LEDs	Front LEDs
Field of view (FOV)	90°		95°	120°		
Depth of Field (DOF)	10 mm~100 mm	25 mm~∞	2 m / 3 m: Front: 8 mm~∞ Side: 7 mm~∞ 5 m / 7 m / 10 m: Front: 8 mm~∞ Side: 5 mm~200 mm	5 mm~100 mm	5 mm~100 mm	3 mm~∞
Still image resolution (.jpg)	2560*1440 (S-HD)		(Dual) 2560*1440	1600*1600	(Dual) 1600*1600	800*800
Video resolution (.mov)	1920*1080		(Dual) 1920*1080	1600*1600	(Dual) 1600*1600	800*800
Articulation angle	2 m / 3 m: full ways ≥ 120° 5 m / 7 m / 10 m: full ways ≥ 80°			Full way >140°	Full way >120°	Full way >110°
Operating temperature	In air: -10~100°C ; In water: 10~30°C					In air : -10~80°C In water: 10~30°C
Temperature rating	100°C temperature resistant with 3 level warning at 60°C / 80°C / 100°C					
Probe head material	Stainless Steel					
Probe material	Tungsten braid					
Joystick console dimensions	(WxDxH) 139.4x193x84.2 mm (w/o SR and insert tubes)					
Joystick console buttons	Brightness+, Brightness-, snapshot / record					
Lock and move	Joystick / Unlock switch on console					
Dust and water proof / RH	Joystick console: IP54 ; Insert Tube: IP67 / 95%					
Liquid resistance	Operable when exposed to machine oil, light oil or 5% saline solution					

Industrial VideoScope | X2000



Clearness | Sharpness | Brightness

6.0mm Dual View Camera | 4 Way Articulating



Dual Front & Side Camera Dual LED Setup

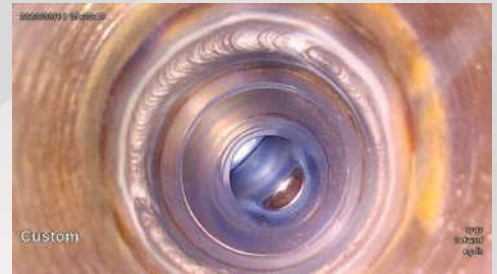
Dual Front & side camera with light distribution crucial to avoid glare spots and reflections. For that reason, the side view camera has two LED light sources, one below and one above the camera lens, allowing for evenly distributed light in any situation.



Clear Vision & Sharp Photos

Nothing is more important than to have a clear view and sharp images during an inspection. That is why the 3.9 mm dual view boasts two powerful cameras that will give you a perfect overview and leave no flaw undetected.

- HD resolution
- Wide FOV of 120°
- DOF of 5 mm~200 mm



**IP67
waterproof**



**100°C
auto-shutdown**



High-resolution images and videos

Great mobility. Outstanding flexibility. Stunning results.

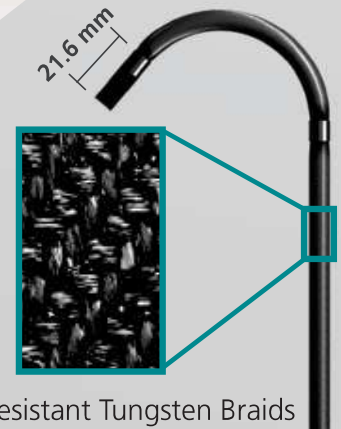
Rugged & Durability

- IP67 waterproof
- 100°C resist & High temperature warning
- Unyielding to scratches and corrosion

Sensitive mechanical control articulation

Full way articulation with lock design, mechanic wiring joystick brings you instant feedback and precise angle control.

21.5 mm short tip length and bending radius make your surrounding inspection job extremely comfortable and efficiently.



Scratch Resistant Tungsten Braids

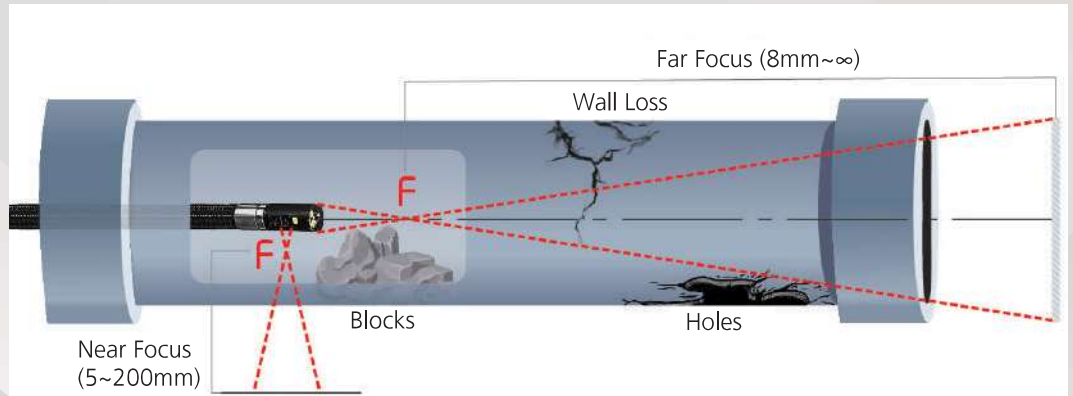
Industrial VideoScope | X2000



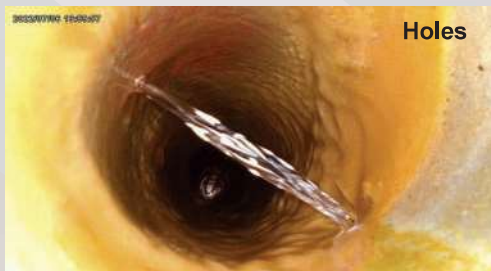
Clearness | Sharpness | Brightness

6.0mm Dual View Camera | 4 Way Articulating

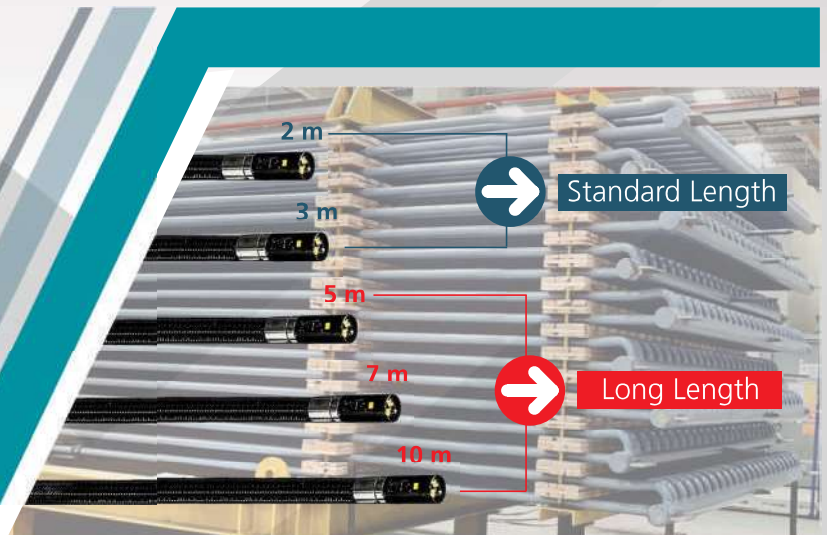
Optimized Probe Tip Optical Design



Long-length probe (5 m/7 m/10 m) tip's sophisticated DOF and FOV Optical design dedicated to tube inspection needs.



All length by demand



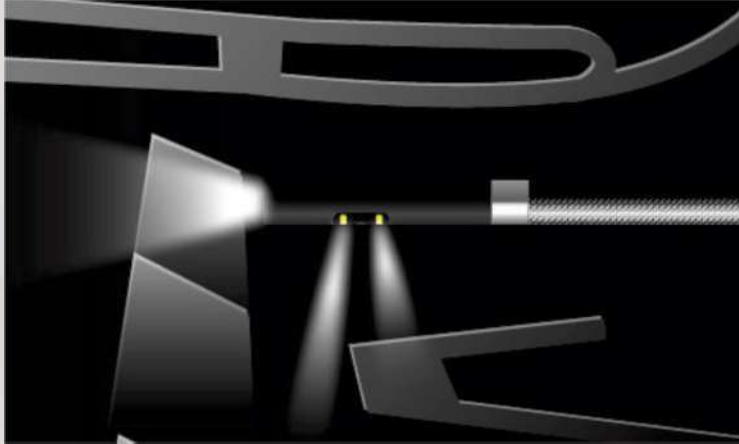
For all purposes inspection especially long tube objects like heat exchangers.

Industrial VideoScope | X2000



Clearness | Sharpness | Brightness

3.9mm Dual View Camera | 4 Way Articulating



Dual Front & Side Camera

Dual LED Setup

Dual Front & side camera with light distribution crucial to avoid glare spots and reflections. For that reason, the side view camera has two LED light sources, one below and one above the camera lens, allowing for evenly distributed light in any situation.

Front Camera

Side Camera



Clear Vision & Sharp Photos

Nothing is more important than to have a clear view and sharp images during an inspection. That is why the 3.9 mm dual view boasts two powerful cameras that will give you a perfect overview and leave no flaw undetected.

- HD resolution
- Wide FOV of 120° (Dual View Probe) / 140° (Front View Probe)
- DOF of 5 mm~100 mm



Front View

Side View

Maneuverability & Precision

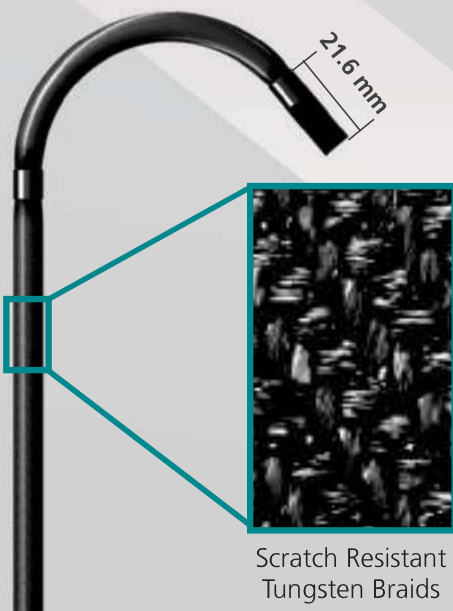
Our insertion probes are made to get to even the hardest-to-reach places, and the 3.9 mm dual view is no exception. It is highly flexible and small enough to reach your next inspection target with maximum efficiency and minimal effort.

- 3.9 mm probe head diameter
- 4 Way articulation
- Mechanical wiring (instant feedback & precise movements)
- Articulation up to 120° (or 140° for single front view probe)

Tungsten Reliability

The 3.9 mm dual view probe has a protective tungsten braided outer layer. The strength and density of tungsten extend the probe lifespan significantly and make it waterproof as well as heat and scratch-resistant.

- IP67 level waterproof and oil proof
- 100°C heat resistance
- Unyielding to scratches and corrosion



Industrial VideoScope | X2000



Clearness | Sharpness | Brightness

2.8mm digital front view 1.5mm Probe | 4 Way Articulating



Bright & Clear Images

Inspect the smallest of bores and pipes with 2.8 mm scope does not compromise between high image quality for a small diameter. Expect sharp & clear images. The bright LEDs let you see clearly in dark spaces, and the wide FOV offers a great overview. And no more blurry images, thanks to the 3 mm - ∞ DOF range!

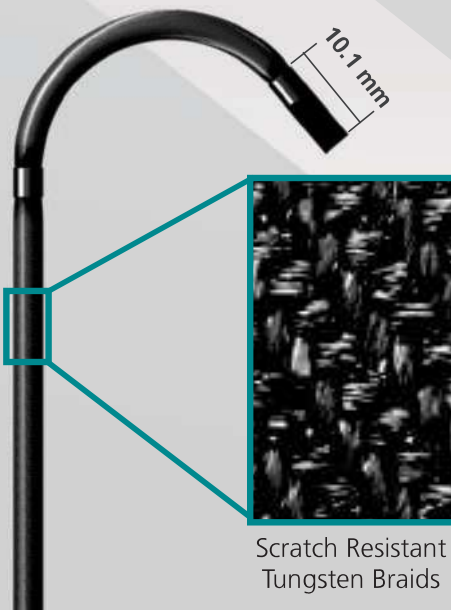
- Resolution: 800 * 800
- FOV: 120
- DOF: 3 mm ~ ∞



Precise Movements:

A short distal-end and four-way articulation ensure precise movements! Thanks to the small diameter, the bending radius is also small and allows you to reach your inspection target even in confined spaces.

- 4 Way articulation
- 110° bending angle
- 10.1 mm probe head length



Tungsten Durability

The 2.8 mm dual view probe has a protective tungsten braided outer layer. The strength and density of tungsten extend the probe lifespan significantly and make it waterproof, heat and scratch-resistant.

- Tungsten-braided outer layer
- IP67 level waterproof and oil proof
- 80°C heat resistance
- Unyielding to scratches and corrosion