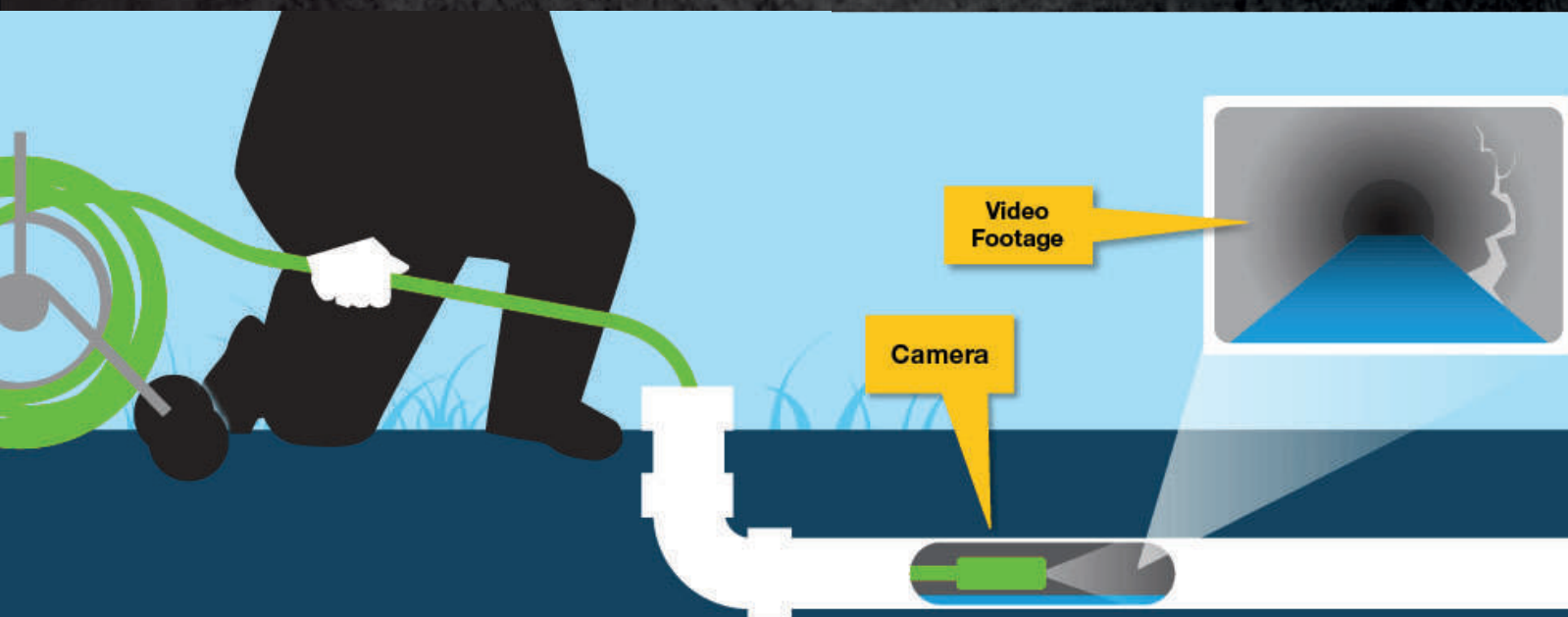


LPIIC

Water & Sewer Pipe Inspection Camera

STAN ONE® Series

**Locate Source of Pollution in Water Pipes
Inspect water pipes for Condition Assessment
Inspect Sewer Pipes, Manholes & Industrial Effluent Pipes**



LPIC Water & Sewer Pipe Inspection Camera

with 60/100/120m length options | 10.5mm rod | camera 38mm Ø

Professional **Video pipe inspection camera** for inspection of buried Water pipelines, Sewer pipes, Drain pipes and Manhole Inspection of Water & Sewerage boards, Municipality, & Large campuses, with the primary purpose of identifying locations of source of water pollution, condition assessment of sewer & water pipes and disaster management.

The LPIC video pipe & drain inspection camera system is equally utilized for inspection of buried telecom PLB ducts. Ideal for **inspecting pipes of dia 60 to 300 mm or higher** & can pass through 90 bends of pipe dia 110mm or higher.

Features:

- **Snapshot & video** recording during pipe inspection with **audio & text notes**.
- **7"** Detachable **HD color** monitor - Mount or keep on the ground.
- **Self-leveling camera**
- **IP68 water proof up to 20 meters**
- With **12 high bright LEDs**
- Built in **meter counter**, 2 cms accuracy, **Digital**
- **Wireless Keyboard** for text entry of notes on site.

Functions:

Industrial Video Drain/Pipe Inspection Camera | LPIC



- 1 7" monitor with DVR, universal bracket, sun visor, built-in Li-battery
- 2 Meter counter device, with zero reset
- 3 Robust stainless steel frame
- 4 Fiberglass rod cable, dia. 10.5mm
- 5 Stainless steel camera head (Ø38mm x 81mm) self-leveling,
- 6 PU Foam wheels, use in any terrain, puncture resistant, all terrain
- 7 Centralisers as shown, Mini & Universal, provided as standard.



Centralisers :

7



Universal Roller Skid, dia.120mm(Min.)
250mm(Max.) for pipe dia.
125mm-300mm



Mini Roller Skid, (Dia. 70mm)
for pipe dia. 75mm-120mm

LPIC Water & Sewer Pipe Inspection Camera

with 60/100/120m length options | 10.5mm rod | camera 38mm Ø



- Ruggedised IP54 Casing, Use in Dust & Rain.
- Audio Capture Apart From Video



- High Bright 12 LEDs see in almost any condition. IP68 Water Proof.
- 720P HD Video.



- Stainless Steel SS304 Non Corrosive Frame Built to Last.
- Ergonomic Design, Compact Sturdy. Use in Any Terrain.
- Use in Relatively Longer Length Pipes Up to 120 Meters



Actual Image Inside Water Pipe



LPIC Water & Sewer Pipe Inspection Camera



LPIC Specifications

Suitable for Pipe, Inner dia	Ø60mm to Ø300mm
Traverse through 90° bends of dia	110mm or higher
Camera Head	
Self-leveling Camera	Yes
Camera Head Size	Ø38mm* 81mm (Main body)
Camera Type	1/3" Sony CCD
View Angle	120
Focus Distance	20cm
Front Lens	Sapphire Glass
Waterproof, Environmental Rating	IP68 Up to 20m under water
LED's	12 High bright LEDs
Camera Material	Stainless Steel #304
Roller Skid	<ul style="list-style-type: none"> Mini roller skid dia 72mm Universal Roller skid dia 120mm
Cable Wheel	
Rod Material	Fiberglass rod
Wheel Material	Stainless steel wheel
Rod Length options	60m, 100m or 120m
Distance meter count	Built in encoder, Digital
Rotation (on screen display)	Slip Ring
Rod Diameter	10mm ±0.5mm
Controller: LCD Display and DVR	
LCD Size	7-inch 16:9 Bright HD color LCD screen (Optional 10.1" screen)
LCD Resolution	7" : 800 x 480 pixel
Mirror and Flip	N/A
Video Resolution	PAL 720 x 576 25 fps Max.
Video Encoding	H.264
Built-in Encoders	2cms accuracy
Wireless Keyboard (For Data entry)	Yes, Text writer function to DVR
Monitor Installation	On top or side of wheel by a universal bracket
Photograph / Snapshot	Yes
Video & Audio Recording	Yes
Output	TV and Audio Output
External Memory	SD Card (up to 32GB)
Data Output	USB to SD Card Reader
LED driver	Built in dimmer
Playback	Photo, Video and Audio
Language	English + 8 Languages
General Characteristic	
Power Supply	12V DC charger
Battery Capacity	12V, Li-on battery
Operating Time	4 to 5 hours
Power Adaptor	Input: 110VAC~240V AC, Output: 12V DC
Gross Dimension & Weight	80 x 36 x 92cms & approx 24kg to 28kg

Standard Kit



Camera Head



Cable & Wheel



Monitor



Mini Roller Skid



Universal Roller Skid



Screw Driver



Remote Control



Power Supply Adaptor



Car Charger



Hex Wrench

Optional Additional Accessory For Rugged Use



134mm Caster
POM Skid



78mm POM Skid



60mm POM ball
back support



POM Skid Lock Sleeve

Option



Built in 512Hz sonde

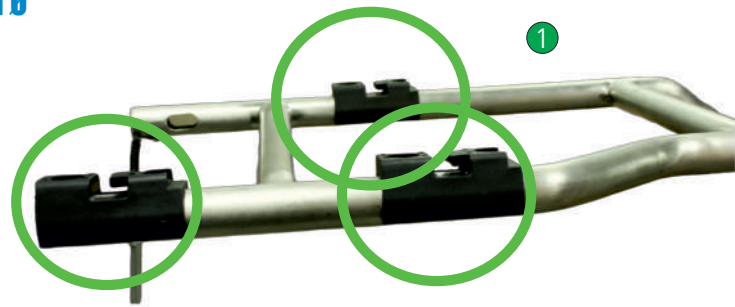
LPIC Water & Sewer Pipe Inspection Camera



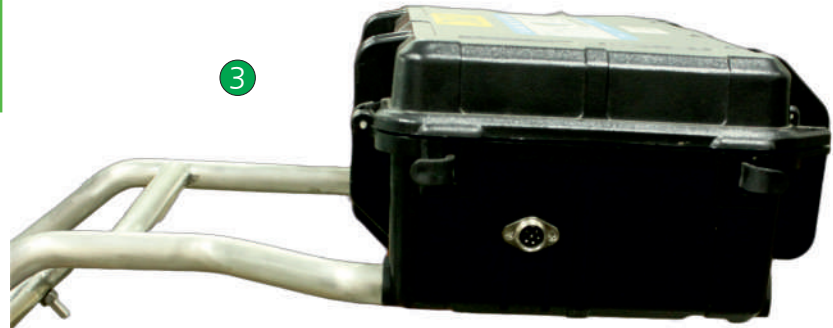
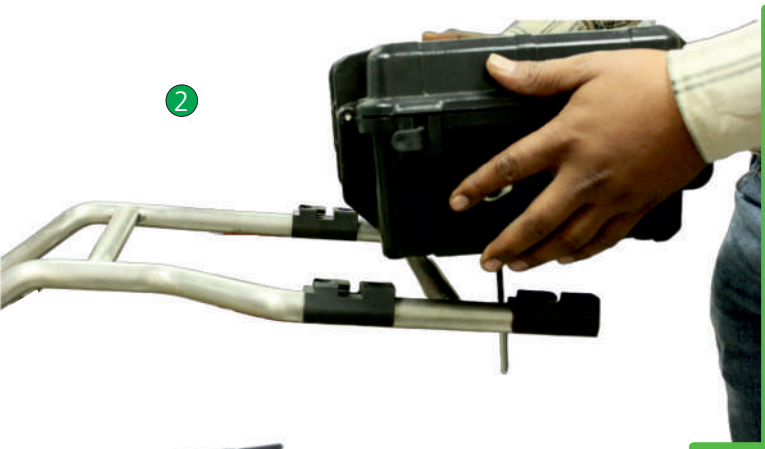
with 60/100/120m length options | 10.5mm rod | camera 38mm Ø

LPIC frame has **Slot-in feature** that enables easy installation & removal of control unit.

Mount on frame & use or keep on ground , as per site requirement.



Simply place Control unit on Slot-in locks & push to the control unit forward.



Key features

- 7" inch HD color LCD screen.
- Wireless Keyboard for data entry
- Snapshot & video recording during pipe inspection with audio & text notes.
- Ruggedised Casing.

Built in 512Hz sonde

(Optional Feature)



Meterage encoder feature allows to know **how far camera has traveled** inside the buried pipe.

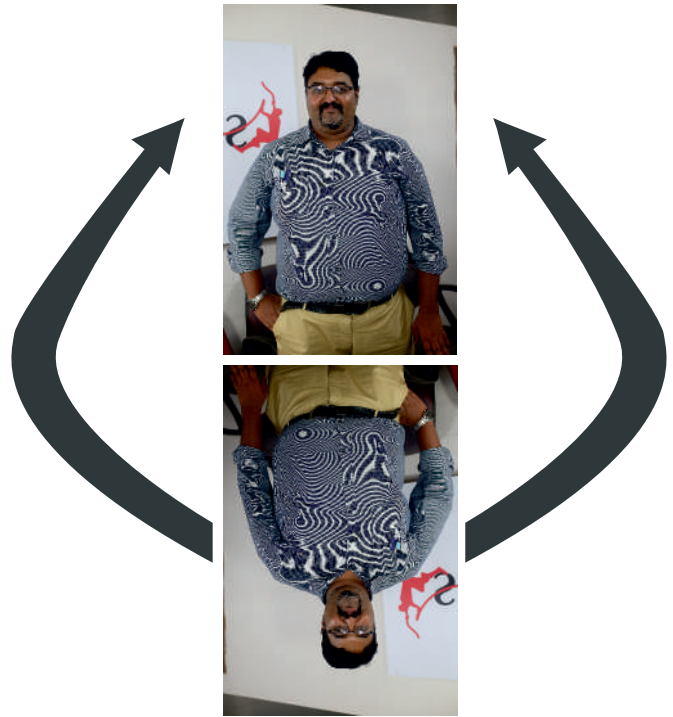
LPIC Water & Sewer Pipe Inspection Camera

LPIC Camera Functions & Features

The **Self-leveling Camera Feature** allows sensors to detect when the camera is tilted or rotated and then automatically adjusts the **camera lens to compensate for the movement instantly**.

The Image Will Always Stay Up-right, Irrespective of the orientation of the camera inside the pipe.

Camera itself is **IP68 Water & Dust Proof** Rated .
Use Upto **20 meter depth** & Upto **2 Bar water Pressure**.



Camera LEDs



- 12 High-Bright LEDs has 4 Illumination modes, User Selectable.
- Scratch-Resistant Camera Glass designed with Sapphire glass.

LPIC Water & Sewer Pipe Inspection Camera

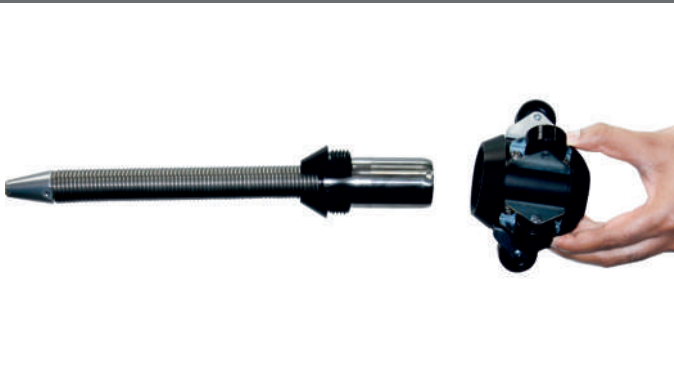
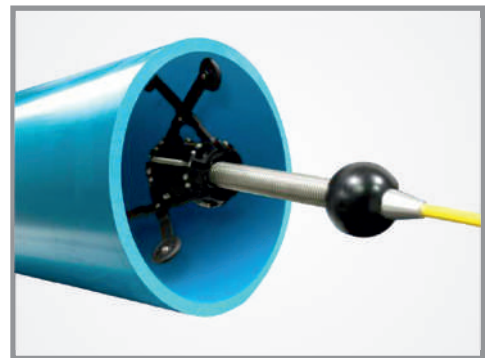
LPIC Camera Accessory

The **POM Skid Accessory Kit** increasing the capability of the LPIC cameras & enables **camera to properly center & align** within the pipe that enables to negotiate multiple corners, bends & increase the depth of range significantly.

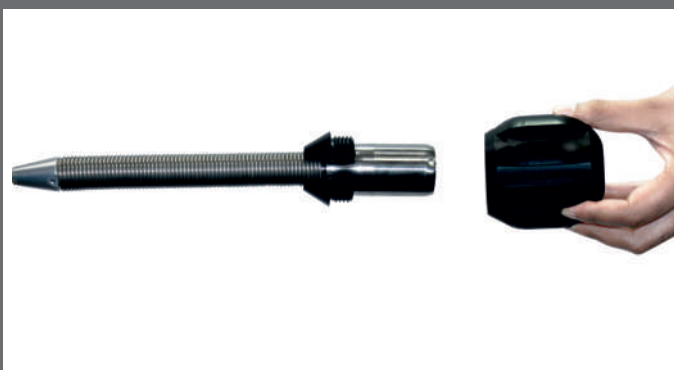
The skid kit comprises four components:

POM skid kit increases capability to use your LPIC pipe inspection camera inside rusted pipes or pipes with debris, with mitigated risk of damage.

- ① 134mm metal body with 5 wheels easy movability, designed to traverse a pipe while being able to take abuse due to debris.
- ② POM skid lock sleeve : coupler (locking sleeve) for screwing the 134mm metal body skid on the LPIC Camera.
- ③ 78mm POM skid, made to allow use in smaller dia pipes, which allows the camera to be snaked through wet debris etc.
- ④ 60mm ball for back support at the rear end of the camera.



**134MM
POM Skid
Ideal
for up to
200mm**



**78mm
POM Skid
Ideal
for up to
100mm**

It is highly recommended to purchase the optional POM Skid kit at the time of purchase of an LPIC Camera.



**Professional
Grade
Products**

**Best In Class
Warranty
Programmes**

**Product &
Service
Training**

Regd. Office:
Asian Contec Ltd.
Asian Centre, B-28, Okhla Industrial Area, Phase-1,
New Delhi -110020, India.

Contact Nos.:
Tel : +91-11-41860000 (100 Lines),
Direct Sales Helpline : +91-11-41406926
Web : www.stanlay.in www.stanlay.com
email: sales@stanlay.com

Works :
Asian Contec Ltd. 13/7,
Mathura road, Faridabad, Haryana, India

Regional Offices :
• Mumbai • Bengaluru • Hyderabad • Vadodara
• Lucknow • Patna • Bhubaneshwar • Guwahati

Sales Channel Locations: • Chennai

Catalogue Version : ST/WOM/LPIC/2023/01



MAKE IN INDIA

**Quality
Management
System**

ISO 9001: 2015

1-QSC202101102



www.stanlay.in