



STAN ONE® Series

SVBS300

BORESCOPE VIDEO INSPECTION CAMERA WITH 5-INCH HD SCREEN

Probe Camera Cable Options

- 5.5mm Dual View Camera
- 8.0mm Dual View Camera
- 3.9mm Single Cameras
- 7.6mm Single View Camera

LARGE SCREEN

5 inches Display, IPS HD technology
Image More Brighter and Clearer

5.0
inch

IPS
Screen

HD
Display



SVBS300

8MM-5M-DL

STAN ONE®



SVBS300 PROFESSIONAL, PISTOL GRIP, DUAL-LENS INSPECTION CAMERA

The **SVBS300** is a compact and versatile professional inspection system, designed for portability and ease of use. Equipped with a **5-inch HD screen**, this handheld device offers a range of camera lens and probe options to cater to various inspection needs. Its **robust and ergonomic pistol grip design** allows for **single-handed operation**, with all control keys conveniently accessible.

Featuring a vibrant **5-inch IPS HD display**, the **SVBS300** provides instant live inspection video feedback. The device comes with a **built-in 32GB memory card** for seamless image capture with **1080HD resolution and video recording** at **720P HD resolution**. The probes are equipped with **adjustable LED lights**, ensuring optimal visibility in even the darkest inspection areas. Additionally, the adjustable handle adds extra comfort during operation, and it incorporates an integrated LED flashlight for added convenience in low-light conditions.

The **SVBS300** is a reliable inspection tool designed to meet the demands of professionals in various fields.

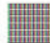

SVBS300

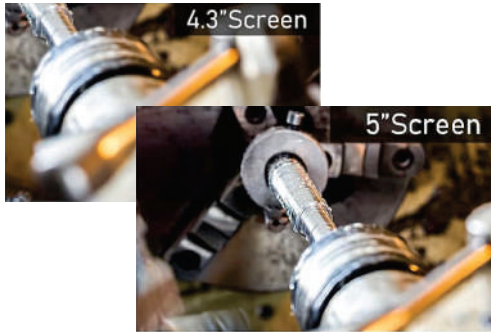


Monitor Features



5" IPS Screen is 3 Times Clearer than 4.3inch

	5" Screen 854x480 (400K Pixel)
	4.3" Screen 480x272 (130K Pixel)



Tempered Glass

IPS LCD
Backlight

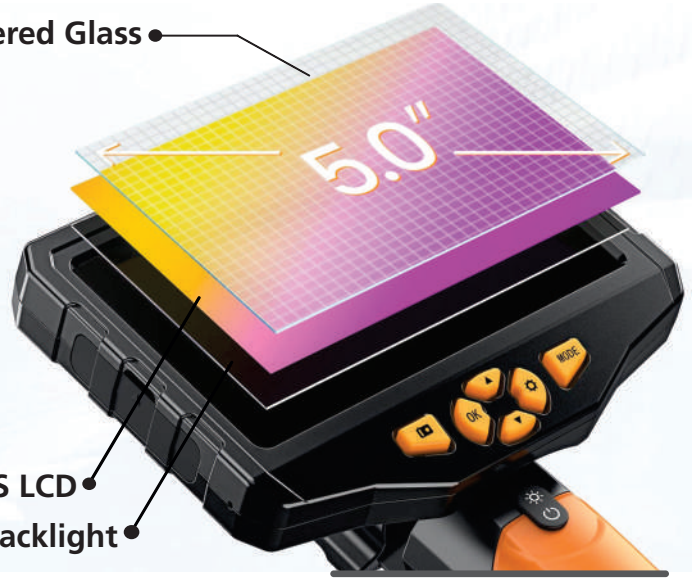


PHOTO AND VIDEO

- 5-inch Colour IPS Display
- Tempered Glass Screen

180° Image Rotation



Built-in 32GB
Memory Card



IP67 Waterproof



Replaceable
Different Cable



LED Ring Light
Illuminates the
Darkest Areas



- 5000mAh Battery
- 4 Hours Working Time



Adjustable Handle

Built-in 32GB
TF card

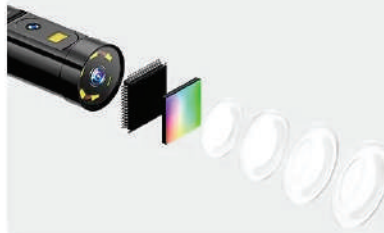


SVBS300



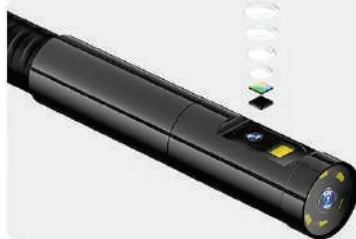
DUAL-LENS FLEXIBLE INSPECTION CAMERA PROBES

Semi-Rigid with Copper Wire



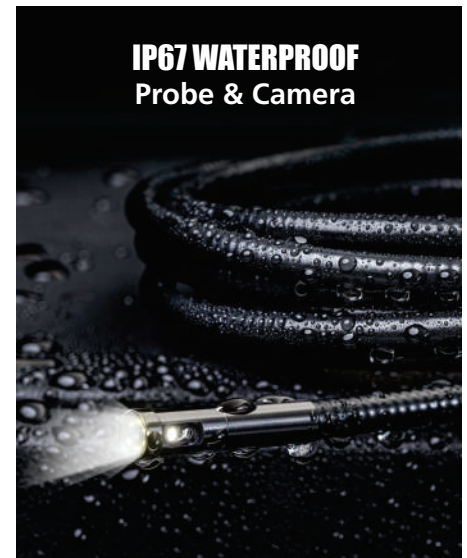
Front-View Camera

- Focal Distance 30-80mm
- 70° View Angle
- 6 rings LEDs



Side-View Camera

- Focal Distance 20-50mm
- 70° View Angle



SVBS300



Specification

Monitor		
Screen	5-inch IPS HD Display	
Screen Resolution	854x480 pixels (FWVGA)	
Image Capturing Resolution	1920x1080 Pixels (JPG)	
Video Recording Resolution	1280x720 Pixels (MOV)	
Storage	32GB Micro SD Card	
Ports	Micro USB Charging Port / Micro SD Card Slot	
Power Source	5000mAh lithium Battery	
Battery Life	5-6 Hours	
Operating Temperature	32° to 113°F (0° to 45°C)	
Flash Light (For Working in Dark Area)	1 Watt Cree LED	
Adjustable Handle	Yes	
Probe Options		
Lens Type	Probe Diameter	Probe Length
Dual, Front & Side Rotating View	5.5mm	3m
Dual, Front & Side Rotating View	8.0mm	5m
Single Lens, Front	3.9mm	1m
Single Lens, Front	7.6mm	3m
Probe Stiffness	Semi Rigid	
Depth of View (Front Camera)	30 mm to 100 mm	
Depth of View (Side Camera of Applicable)	20 mm to 50 mm	
LED Light	6 Adjustable High-Intensity LEDs	
LED Adjustable Step	Off + 3 Step	
Rotation	180°	
Viewing Angle (FOV)	70°	
Megapixel Camera	1.0 Megapixel	
Water Proof Rating	IP67	



SVBS300



Multiple Application

Nondestructive inspection of hard-to-reach or risky places



Automotive Maintenance



House Inspection



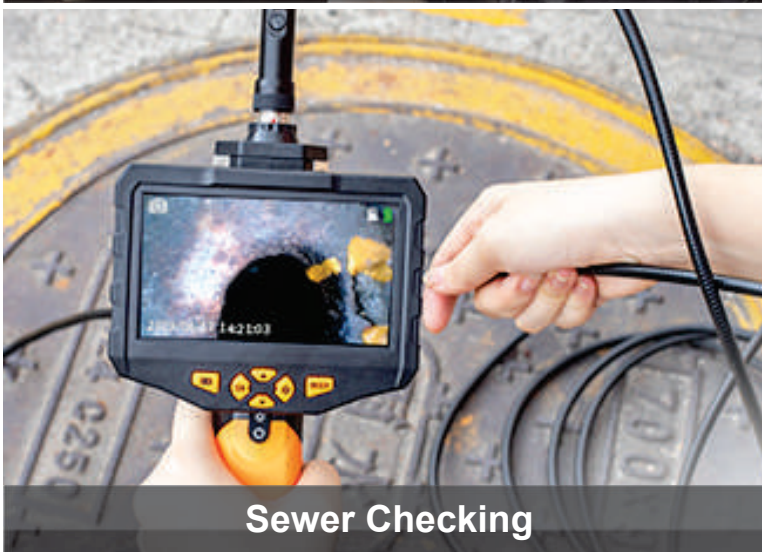
Home Appliance Repair



Pipeline Inspection



Air Conditioning Inspection



Sewer Checking



Mechanical Inspection

SVBS300



Accessories & Packing



Hook



Magnet



Mirror



Carry case

Monitor



Camera Probe



Micro USB Charging Cable



User Manual





STANLAY™

**Professional
Grade
Products**

STANLAY™

**Best In Class
Warranty
Programmes**

STANLAY™

**Product &
Service
Training**

Regd. Office:
Asian Contec Ltd.
Asian Centre, B-28, Okhla Industrial Area, Phase-1,
New Delhi -110020, India.

Contact Nos.:
Tel : +91-11-41860000 (100 Lines),
Direct Sales Helpline : +91-11-41406926
Web : www.stanlay.in www.stanlay.com
email: sales@stanlay.com

Works :
Asian Contec Ltd. 13/7,
Mathura road, Faridabad, Haryana, India

Regional Offices :
• Mumbai • Bengaluru • Hyderabad • Vadodara
• Lucknow • Patna • Bhubaneshwar • Guwahati

Sales Channel Locations: • Chennai

www.stanlay.in

**Quality
Management
System**

ISO 9001: 2015

1-QSC202101102

