

Proceq GPR Live

The GPR for everyone

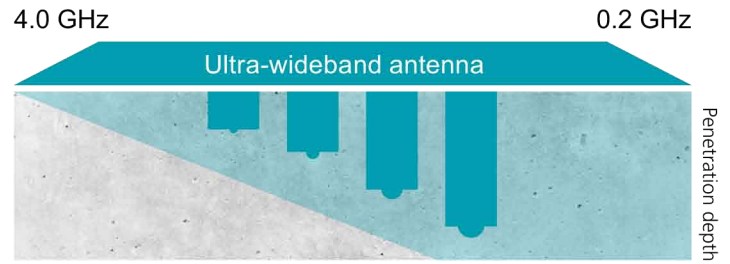
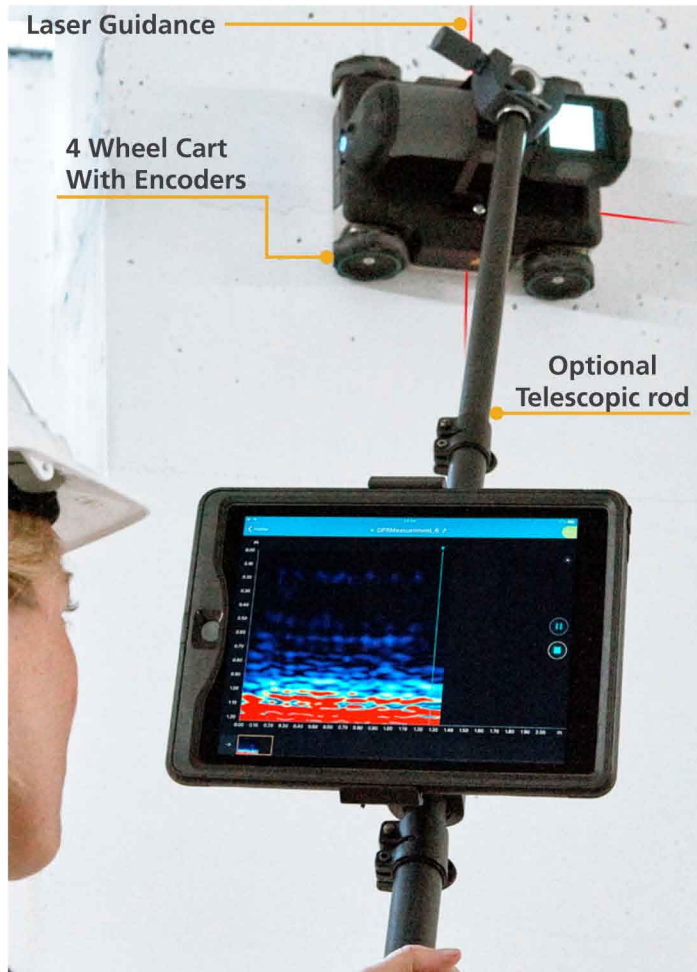


**PERFORM STRUCTURAL IMAGING
LOCATE REBAR IN CONCRETE**

- Upto 0.7m Depth of Investigation
- Stepped Frequency Continuous Wave GPR

Proceq Gpr Live - The Most Innovative Ultra Wideband Portable GPR For Concrete Scanning

Proceq GPR Live is the beginning of a new era in NDT. Outstanding structural building assessment combined with a compact wireless scan car delivers unmatched performance for Rebar Detection based on ultra wide band GPR Technology. The new Proceq GPR Live comes with the unique stepped-frequency continuous-wave (SFCW) technology delivering the widest frequency spectrum covering all applications typically addressed with multiple separate antennas in the range of 0.9 to 3.5 Ghz which can now be covered with a single device!



Proceq GPR Live covers all frequencies from 0.2 to 4.0 GHz with one single device



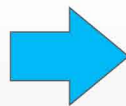
Proceq GPR Live Scan Wirelessly Connects to an Apple iPad

Measuring **Modes** Include
Line Scan & Area Scan
(60x60cms/24x24inch)

Two Product Options:

Proceq GPR Live Basic

Basic enables contractors to reliably avoid hit damage when drilling, cutting, and sawing, by providing superior measuring rebar detection performance thanks to its ultrawideband antenna, and at an unbeatable price.



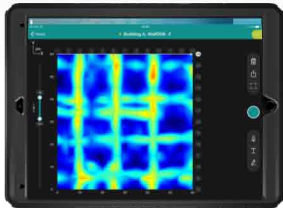
Proceq GPR Live Pro

Pro enables engineering consultants and structural inspectors to tackle all concrete imaging jobs of rebar in structures where more on site analysis & intuitive reporting documentation is desired, thanks to the sophisticated 3D time slice control for object & positioning data visualization features.

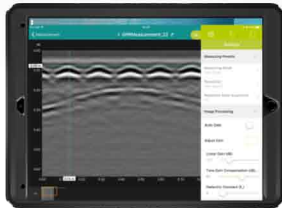
Proceq GPR Live Offers 5 Different Views Of Radar Data Of Increasing Sophistication

The Proceq GPR Live app is intuitive and simple to use. The user interface offers many different live view settings that help to optimize on-site data acquisition and evaluation. A.I. functions, laser guidance and the rollback cursor assist object tagging.

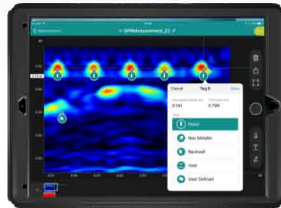
Measuring Modes include line scan & Area scan (60x60cms/24x24inch)



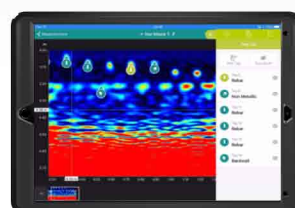
**Intuitive Depthslice/
Timeslice View**



**Standard
Non - Migrated Scan**



**Intuitive Migrated
"Heatmap"**



Object Positioning

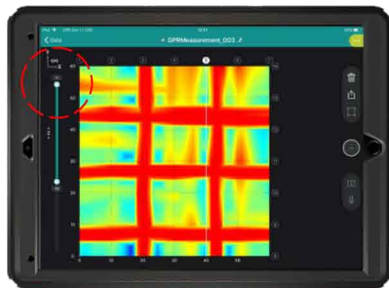


3D View

Available in Basic & Pro Version

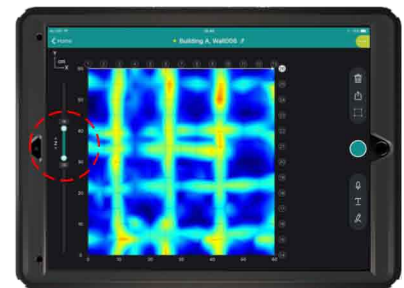
Available Only in Pro

Timeslice View Basic Hit Prevention for Coring

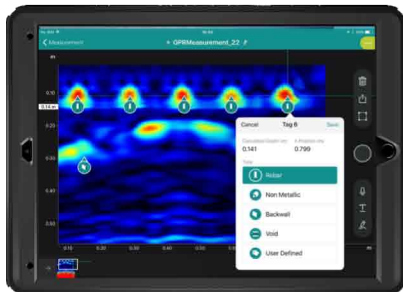


- Processed data from combined line scans (C-Scan)
- Shows detected objects within distance from surface selected by the user
- Top slider position is locked at 0

Timeslice View Pro Investigation of Structures



- Enables users to focus on any detected object at any depth range within the concrete
- Top slider can be freely set by user
- Allows more detailed investigation



Migrated Line Scan Simplified, intuitive view of GPR data

- Intelligently post-processed radar data (also known as "B-scan", "radargram")
- Enables users to infer the location and shape of objects detected within concrete
- Easier to intuitively interpret GPR data, even for inexperienced users
- Available in both Basic & Pro Version

3D View Intuitive, visually stunning reporting

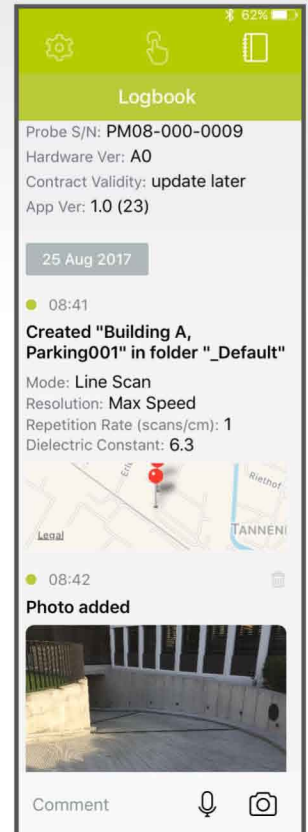
- 3D visualization of a Timeslice View Pro
- Enables users to enjoy the most realistic view of detected objects
- Spectacular reporting for the most demanding end-customers
- Among all GPR devices, only Proceq GPR Live offers on-site 3D View
- Available only in Pro Version



Specification :

| | |
|---|---|
| Measuring principle | Stepped-frequency continuous-wave GPR |
| Frequency range | 0.2 to 4.0 GHz |
| Central frequency | 2.4 GHz |
| Bandwidth | 2.85 GHz |
| Maximum peak power | -7 dB EIRP |
| Max. depth range | 70 cm / 28 inches on dry concrete |
| Dimensions | 220 x 180 x 143 mm / 8.7 x 7.1 x 5.6 in |
| Weight | 2 kg / 4.4 lb |
| Battery | 8 x AA (alkaline or rechargeable) |
| Battery lifetime | 3.5 hours of continuous use |
| Display | Any Apple iPad |
| Operating temperature | -10 to 50 °C / 14 to 122 °F |
| Humidity | <95% RH, non-condensing |
| IP classification | Ip54 |
| Export (only Pro and Unlimited version) | Measurement (Proceq GPR Live app file), snapshot (JPG), chart (CSV) |
| Languages | English, German, Spanish, Chinese, Japanese |
| Regional settings | Metric and Imperial units |
| Applied norms and standards | AASHTO R 37-04, ACI 228.2R.98, ASTM D4748-10, ASTM D6087-08, ASTM D6432-11, EN 302066 - ETSI. |

Geotag Reporting



Ordering Information

Service and warranty information

Each instrument is backed by the standard Proceq 2-year warranty and extended warranty options for electronic components.

Standard warranty

- Electronic components of the instrument: 24 months
- Mechanical components of the instrument: 6 months

Proceq GPR Live Probes

| | |
|------------|---------------------------------------|
| 393 10 100 | Basic (With iPad Provided Separately) |
| 393 10 150 | Upgrade from Basic to Pro |
| 393 10 200 | Pro (With iPad Provided Separately) |

Accessories

| | |
|------------|---|
| 393 40 200 | Telescopic rod with tablet holder (iPad Air/Mini) |
| 393 00 045 | Battery |

| Product Models | Basic | Pro |
|----------------------------|-------|-----|
| Ultra-wideband GPR | | |
| Basic time-slice view | | |
| Pro time-slice view | | |
| 3D View | | |
| Data sharing and reporting | | |
| Secure cloud features | | |

Asian Contec Ltd. is the preferred Proceq distributor for Proceq Live GPR for India
Contact Us For More Technical Or Pricing Information

Asian Contec Ltd.

Asian Centre, B-28, Okhla Industrial Area, Phase-1, New Delhi -110020, India.

Contact Nos. Tel : +91-11-41860000 (100 Lines), Direct Sales Helpline : +91-11-41406926,

Web : www.stanlay.in www.stanlay.com email: sales@stanlay.com

Regional Offices : • Delhi • Faridabad • Lucknow • Mumbai • Ahmadabad • Bengaluru • Hyderabad

