

R800 MULTIFUNCTION REBAR SCANNER & CORROSION DETECTOR



Significant Capability at an affordable price. No need for a separate instrument for rebar detection – the R800 provides both Rebar Cover & Dia Measurement and Corrosion Potential measurement in the same instrument.

The R800 Rebar Scanner provides the capability to detect : Rebar

- Location of rebar in concrete
- Thickness of cover or protective layer
- Rebar diameter
- Rebar Grid Scan Orientation and distribution of rebar

Corrosion:

The R800 also provides the ability to:

- Examine the corrosion potential
- Localise active corrosion in rebar in building structures

The procedure is virtually non-destructive and is performed by carrying out a grid based measurement.

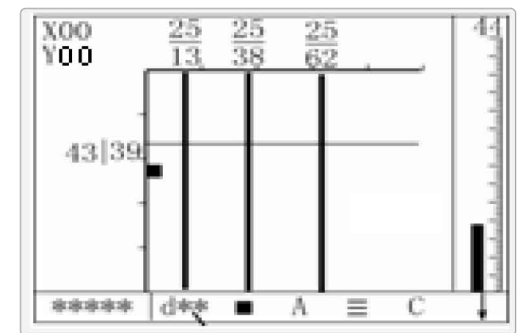


Features : Rebar Scanning :

- Two probes provided as standard with instrument, providing flexibility to use on a variety of structures :
- Unique 4 Wheel probe, dust proof and waterproof, for fast and reliable rebar scanning on large structures.
- Small probe for detection in smaller structure with constricted spaces.
- The instrument provides the capability to very accurately and comprehensively detect rebar .
- The instrument display includes a signal strength bar.
- As the instrument probe comes closer to the rebar, the signal strength bar increases – When on top of rebar, the instrument automatically locks the thickness value of cover.
- Automatic storage option is available in instrument.
- The instrument allows parameter setting definition of various parameters including estimated dia, Minimum cover to detect, Type of structure etc.
- The R800 Instrument also contains Data Storage and Data transfer Capability.

The instrument provides following methods of scanning :

- **General Scan** : for fast detection of rebar.
- **Dense Rebar Measurement** : for allowing detection of rebar in structures which may have presence of high density of rebars such as beams.
- **Grid Scan** : that allows distribution of rebar to be evaluated through grid diagram with definition of rebar cover and diameter in X (Horizontal) and Y (Vertical) directions.



Features : Corrosion Potential Measurement:

The R800 includes a two electrode handle system which provides flexibility for the operator to:

- Test using **one electrode** based on half cell potential method.
 - Test using **two electrodes** based on gradient method.
- In both cases, electrodes used are copper sulfate type.

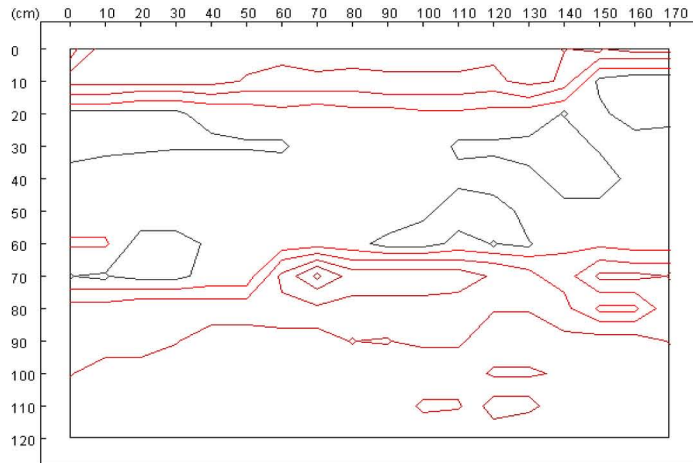


R800 MULTIFUNCTION REBAR SCANNER & CORROSION DETECTOR

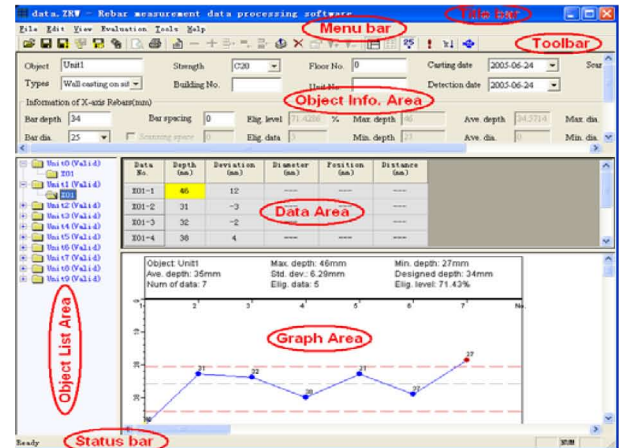


Software Provided for Data Processing of Rebar and corrosion potential measurement :

- Is an Easy to Use Powerful processing software provided for generation of reports. Operates on windows based computers.
- The software provides the capability to manage data acquired including object information and measurement point data such as cover depth, diameter and position of rebar.
- To generate graph of object detection data.
- The software allows merging of multiple test data.
- Print Preview and Print out capability for measurement data from software menu.
- The software provided is a powerful engineering tool that allows input of design strength, detection date, object type and also allows input of scanning distance between two scans in same direction.



— -180mv
— -160mv
— -140mv
— -120mv
— -100mv
— -80mv
— -60mv
— -40mv
— -20mv
— 0mv
— 20mv
— 40mv
— 60mv
— 80mv
— 100mv
— 120mv
— 140mv
— 160mv
— 180mv



Specification:

Rebar Detection

Rebar diameter range (in mm)		Φ6mm~Φ50mm	
Protective layer thickness range (mm) cover		First range (in mm) 3~98	Second range (in mm) 3 ~196
Maximum allowed error for protective layer thickness	±1 mm	6~56	3 ~79
	±2 mm	57~69	80 ~119
	±4 mm	70~98	120~196

Corrosion detection method

Corrosion detection method	Single electrode	Double electrode
Measuring Range	±1000mV	0 ~ 1000 mV
Accuracy	±1mV	±1mV
Tested points Interval X	0~100 adjustable	20 fixed
Tested points Interval Y	0~100 adjustable	0~100 adjustable
Power	Built-in rechargeable lithium battery	
Battery operating Time	>25 hours	
Dimensions	212mm x 134mm x 50mm	
Weight	0.9kg	
Data transmission	wireless transmission & USB thumb drive storage	

Product Supply Includes: R800 instrument, Small probe, 4 Wheel probe, Double Electrode Handle, Waterproof Case.



R800



Small Probe



4 Wheel Probe



Double Electrode Handle



Waterproof Case

Item Code: ST-R800