

STREAM-X

STREAM-X is a massive array GPR for sub-surface mapping in environmental & archeological surveys provided with dedicated software specially designed to provide 2D & 3D tomography for an immediate visualization and detection & anomalies with automated target recognition.

FEATURES :

- **Multichannel Antennas** in cart format towed by a vehicle (speed > 15 Km/h).
- **Suitable** for working on rough **terrain**.
- Can be dragged by hand or towed by a vehicle.
- Positioning: **survey** wheel, **GPS** or Total station.
- High productivity: **1 hectare/hour**.
- High detection capability owing to the following data spacing:
 - up **12 cm** @200 MHZ
 - up to **4 cm** @ 600 MHZ
- Higher investigation depth owing to high stacking factor and high performance low frequency antennas.
- **Configurable** with **GPS solution** for a fast and **complete area** coverage.
- **Dedicated GRED 3D post processing** software with automated transfer to **CAD/GIS**.



STREAM-X systems : Configure with an array of 200 or 600 MHz antennas.

MODULARITY AND ARRAY ARCHITECTURES :

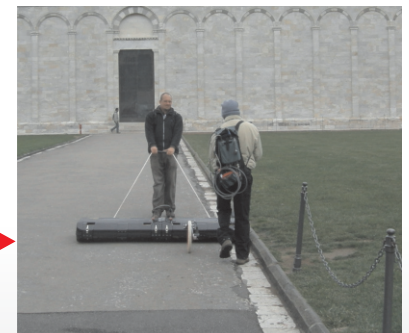
1x200 MHz DML array for detecting main target underground (12 cm transversal sampling; VV polarization).

GPS or Total Station

Radar Control Unit



Stream X: the DML array can be dragged by hand for archeology or environment surveys.



Cart can be towed by a van or a quad

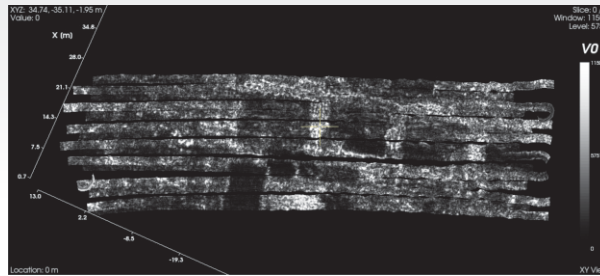
STREAM-X

WORK FLOW :

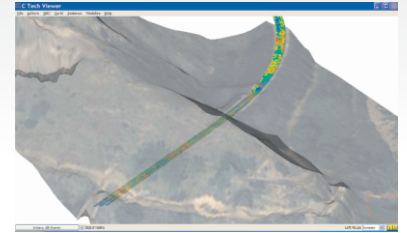
1. DATA ACQUISITION :



2. DATA PROCESSING (OFFICE).

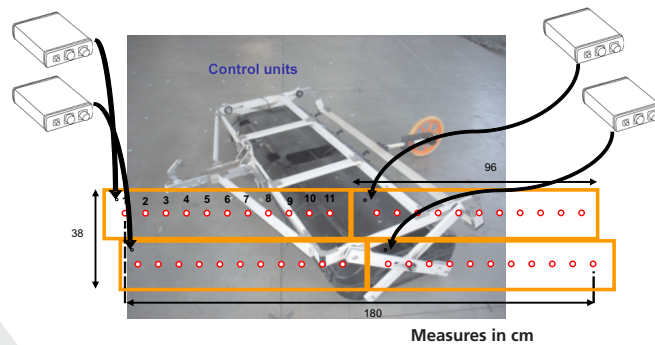


3. 3D VIEW IN CAD/GIS ENVIRONMENT



APPLICATIONS :

- Mapping of extensive archaeological sites.
- Detection of underground structures.
- Cavity identification and mapping
- Underground tank detection
- Clearance of area prior to construction
- Uxo detection (unexploded ordnance)



TECHNICAL SPECIFICATIONS :

Parameters	N°1 DML (200 MHz)	N°1 DML (600 MHz)	N°2 DML (600 MHz)
Radar Control Unit (DAD Mch)	1	2	4
Number of antenna box	2	2	8
Number of antenna dipoles (TX+RX)	8+8	12+12	24+24
Scan width (cm)	172	172	172
Polarization	VV	VV	VV
Data spacing in transversal direction (cm)	12	8	4
Antenna Weight (Kg)	40	36	40
Antenna CART dimension (m)	Length: 2.02	Width: 2.10	
CART Weight (Kg)		50	
Typical Data collection speed Km/h		15	
Item Code	STREAM-X		

SOFTWARE SPECIFICATIONS :

Processing Software	GREED HD ³ including:
	Automatic and Manual Data Processing
	Propagation Velocity Estimation (hyperbola fitting)
	2D/3D Representation
	Data Fusion for different frequency
	Interactive 2D Data Inspector
	GPS Location
	Irregular volume representation
OUTPUT DATA	B-scan view C-scan view
	Insert targets function
	Automatic data transfer into CAD maps